

# BEC 7300GT ADSL2+ Router

## ADSL2+ Router w/ 4-Port & wireless AP Featuring Easy Sign-On



### KEY FEATURES

- High speed Internet access with ADSL2/2+
- Firewall Security with DoS Prevention and SPI
- Easy Sign-On (EZSO) and Web-based Configuration
- **Annex M for enhanced upstream speed**
- Quality of Service Control for Traffic Prioritization and Bandwidth Management
- Universal Plug and Play (UPnP) Compliant
- Dynamic Domain Name System (DDNS)
- Supports Virtual Private Network (VPN) pass-through

#### Easy Sign-On (EZSO)/ Zero Configuration

The Easy Sign-On (EZSO) technology allows users to establish an ADSL connection effortlessly via standard web browser like IE. The router can automatically detect the PPPoE/PPPoA or DHCP protocol for your ADSL connection. Just log in to the system with the required username and password that is provided by your ISP, the router will automatically establish the Internet connection. This user-friendly design supports all kinds of operating systems.

#### Double Your Upload Speed with Annex M

The router complies with industry standard Annex M. It supports downstream rates up to 12/24 Mbps with ADSL2/2+, and upstream rates up to 2.8 Mbps. With this technology, users enjoy not only high-speed ADSL services, but also broadband multimedia applications such as interactive gaming, video streaming and real-time audio much easier and faster than ever.

#### Extremely User-Friendly Interface

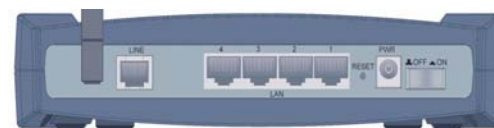
The simple to navigate web based GUI allows for simple management of advanced applications such as IPTV, VOIP, gaming and video conferencing. IGMP, VLAN, Remote accessing and wireless networking can be easily set up to fit your network needs.



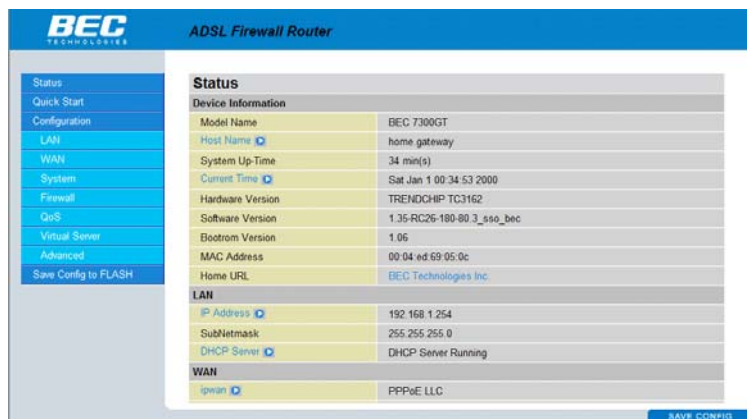
**BEC 7300GT**



**BEC 7300GT (Front Panel)**



**BEC 7300GT (Rear Panel)**



← **BEC 7300GT GUI Web-based Management Interface**

## Technical Specifications

### ADSL Compliance

- Compliant with ADSL Standard
  - Full-rate ANSI T1.413 Issue 2
  - G.dmt (ITU G.992.1)
  - G.lite (ITU G.992.2)
  - G.hs (ITU G.994.1)
- Compliant with ADSL2 Standard
  - G.dmt.bis (ITU G.992.3)
  - ADSL2 Annex M (ITU G.992.3 Annex M)
- Compliant with ADSL2+ Standard
  - G.dmt.bisplus (ITU G.992.5)
  - ADSL2+ Annex M (ITU G.992.5 Annex M)

### Network Protocols and Features

- NAT, static routing and RIP-1/2
- Universal Plug and Play (UPnP) Compliant
- Dynamic Domain Name System (DDNS)
- Virtual Server and DMZ
- SNTP, DNS relay and IGMP proxy

### Firewall & Virtual Private Network (VPN)

- Built-in NAT Firewall
- Stateful Packet Inspection (SPI)
- Prevent DoS attacks including IP Spoofing, Land Attack, Smurf Attack, Ping of Death, TCP SYN Flooding, etc.
- Packet Filtering – port, source IP address, destination IP address, MAC address
- URL Content Filtering – string or domain name
- Password protection for system management
- VPN pass-through

### Quality of Service Control

- Support DiffServ approach
- Traffic prioritization and bandwidth management based on IP protocol, port number and address

### Models & Standards Support

- BEC 7300: Annex A & Annex M
- Annex A and Annex M: ADSL over POTS

### ATM and PPP Protocols

- ATM Adaptation Layer Type 5 (AAL5)
- Multiple Protocol over AAL5 (RFC 2684, formerly RFC 1483)
- Bridged or routed Ethernet encapsulation
- VC and LLC based multiplexing
- PPP over Ethernet (PPPoE)
- PPP over ATM (RFC 2364)
- OAM F4/F5

### Management

- Quick Installation Wizard and Auto-scan ADSL settings
- Web-based GUI for remote and local management
- Firmware upgrade and configuration data upload and download via Web-based GUI
- Embedded Telnet server for remote and local management
- Available Syslog monitoring
- Support DHCP server/client/relay
- SNMP v3, MIB-I and MIB-II support

### Operating Environment

- Operating temperature: 0 ~ 40 °
- Storage temperature: -20 ~ 70 °
- Humidity: 20 ~ 95% non-condensing

### Hardware Specification

#### Physical Interface

- LAN: 4-port 10/100M auto-crossover (MDI/MDI-X) switch
- LINE: ADSL port
- Factory default reset button
- Power jack
- Power switch

#### Physical Specification

- (BEC 7300) Dimensions:  
5.20" x 3.70" x 1.38"  
(132mm x 94mm x 35mm)

#### Power Requirement

- Input: 12V DC, 1A



**BEC 7300GT Application Diagram**

Note: Specifications in this datasheet are subject to changes without notice.