

## High-performance ADSL2+ Modem / Router

Supports IGMP Snooping, 802.11g Wireless, QoS



### Features:

- Supports Hotspot wireless services
- Multi-protocol support, including PPPoA, PPPoE, and RFC 1483 and interchangeable between Bridge and Router mode
- Support up to 8 PVC channels
- DiffServ QoS Control for traffic prioritization and bandwidth management
- IGMP snooping for IPTV service
- Built-in configurable 4-port switch
- Firewall security with DoS prevention and SPI
- Parental Control with URL Content Filtering and Packet Filtering
- Support VPN Pass-Through
- 802.11g Wireless AP with WPA Support (7402GTM only)
- Firmware upgradeable through TFTP or HTTP
- Supports SNMPv3



▲ BEC 7402 GTM

### Field Proven High-Performance ADSL2+ CPE for IPTV

7402GTM and 7402TM are based on the Conexant Argon 432 chipset, which supports up to 24Mbps with an ADSL2+ connection. Field tests resulted in 19Mbps at 8K feet and 15Mbps at 11K feet. BEC 7402 series is fully interoperable and compatible with major DSLAMs, middlewares, and Set-top-boxes.

### Easy Configuration and Management

BEC 7402 series support up to 8 configurable PVCs for different applications. Easy-to-use Web GUI allows users to manage multiple VLANs. CLI configuration is available for advanced settings. For IPTV applications, both 7402GTM and 7402TM support intelligent IGMP functions for management of video services.

### Advanced Remote Management and Monitoring Capability

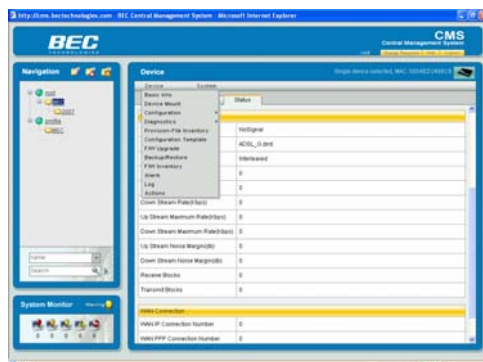
BEC CMS is a flexible remote management tool designed for TELCO and Service Providers to quickly reduce maintenance and support costs without additional hardware investment or complex network setups. It leverages the powerful BEC ADSL2+ CPE and centralized main server to automate, integrate and diagnose the process of provisioning, configuration and management of deployed BEC xDSL devices.

#### Key Features & Benefits

- Auto-provisioning of service activation.
- Remote single or batch firmware update.
- Remote device diagnostics.
- Eliminate ACS & maintenance costs.
- Reduce technical support costs.
- Eliminate truck roll.
- Drive new revenue streams – Triple Play.



BEC 7402GTM Rear Panel View



## TECHNICAL SPECIFICATIONS

### ADSL Compliance

- Compliant with ADSL Standards
  - Full-rate ANSI T1.413 Issue 2
  - G.dmt (ITU G.992.1)
  - G.hs (ITU G.994.1)
  - s=1/2
  - ADSL over ISDN/U-R2
- Compliant with ADSL2 Standards
  - G.dmt.bis (ITU G.992.3)
  - ADSL2 Annex M (ITU G.992.3 Annex M)
- Compliant with ADSL2+ Standards
  - G.dmt.bisplus (ITU G.992.5)
  - ADSL2+ Annex M (ITU G.992.5 Annex M)

### Network Protocols and Features

- NAT, static routing and RIP-1/2
- Universal Plug and Play (UPnP) Compliant
- Dynamic Domain Name System (DDNS)
- Virtual Server and DMZ
- SNTP, DNS relay and IGMP proxy
- IGMP Snooping for video service
- POP3 (email account checking)

### Firewall

- Built-in NAT firewall
- Stateful Packet Inspection (SPI)
- Prevent DoS attacks including IP Spoofing, Land Attack, Smurf Attack, Ping of Death, TCP SYN Flooding, etc.
- Packet filtering – port, source IP address, destination IP address, MAC address
- URL Content Filtering – string or domain name detection in URL string

### Quality of Service (QoS)

- Support DiffServ monitoring
- Traffic prioritization and bandwidth management based-on IP protocol, port number and address

### Wi-Fi 802.11g (7402GTM only)

- Compliant with IEEE 802.11g and 802.11b standards
- 2.4 GHz – 2.484 GHz frequency range
- Up to 54 Mbps wireless operation rate
- 64/128 bits WEP supported for encryption
- WPA/WPA2 support

### ATM and PPP Protocols

- ATM Adaptation Layer Type 5 (AAL5)
- Multiple Protocol over AAL5 (RFC 2684, formerly RFC 1483)
- Bridged or routed Ethernet encapsulation
- VC and LLC based multiplexing
- PPP over Ethernet (PPPoE)
- PPP over ATM (RFC 2364)
- Classical IP over ATM (RFC 1577)
- MAC Encapsulated Routing (RFC 1483 MER)
- OAM F4/F5

### Management

- Quick Installation Wizard and Auto-scan ADSL settings
- Web-based GUI for remote and local management
- Firmware upgraded and configuration data upload and download via Web-based GUI
- Embedded Telnet server for remote and local management
- Available Syslog monitoring
- SNMP v3, MIB-I and MIB-II supported
- Support DHCP server/client/relay

### Hardware Specifications

#### Physical Interface

- WLAN: one detachable antenna (7402GTM only)
- WAN: RJ11 ADSL port
- LAN: 4-port 10/100M auto-crossover (MDI/MDI-X) switch
- Console: PS2
- Factory default reset button
- Power jack
- Power Switch

#### Physical Specifications

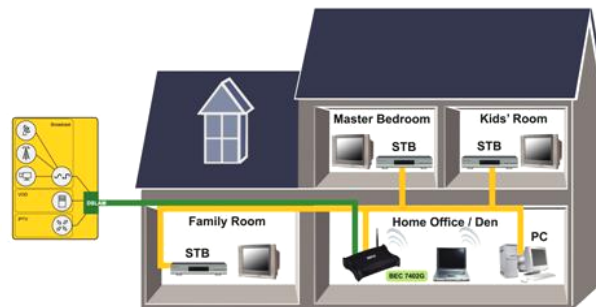
- Dimensions: 7.09" x 4.72" x 1.57"  
(180mm x 120mm x 40mm)

#### Power Requirement

- Input: 12V DC, 1A

#### Operation Environment

- Operating temperature: 0 ~ 40°C
- Storage temperature: -20 ~ 70°C
- Humidity: 20 ~ 95% non-condensing



← IPTV Application Diagram

Note: Specifications in this datasheet are subject to changes without notice.